



# destefani

SINCE 1979  by GIARDINAGROUP

## DESTEFANI MVS PROFILE SANDERS



"MVS 4000"



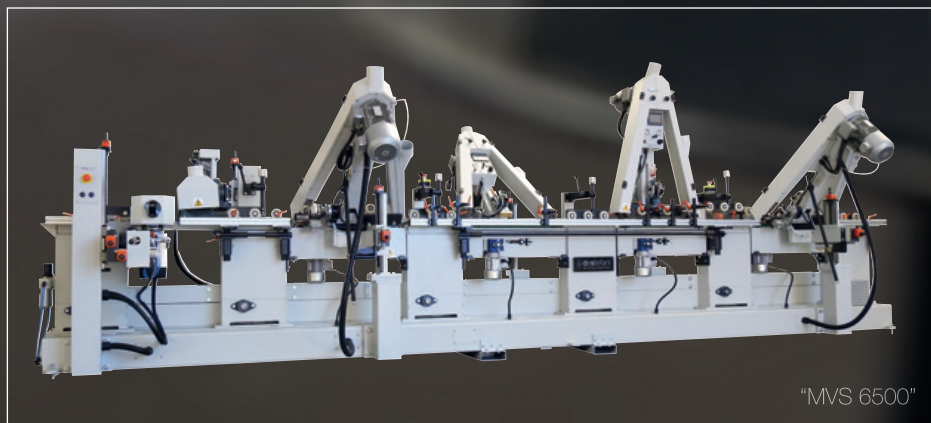
by **giardinagroup** FINISHING SOLUTIONS 1972

**DESTEFANI profile sanders** can be configured to suit every customer's requirements, thanks to their **modular structure**: from the "entry level" version featuring four abrasive grinders, to the most performance-orientated version with 4 grinders, 4 tilting sanding units for flat or shaped parts and an oscillating unit for flat parts of up to 200mm.

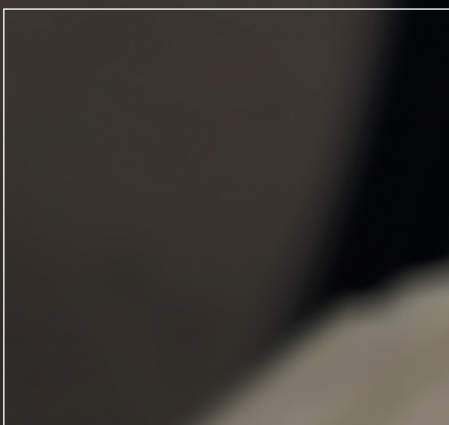
Units for other sizes and smaller units for sanding surfaces are available on request. The ideal solution to easily obtain the best finish, with a fast and reliable machine that can sand and satin-finish any type of profile, frame or strip made of wood, MDF or other veneered or coated materials.

"MVS" machines can either be stand-alone or placed in a production line. They are equipped with an electronic variable speed **drive motor**, **transmission** system with worm gearbox, multiple rubber **belts** that are also perfect for high speeds, **top pressers** with rubber wheels on ball bearings, **side guides** with adjustable width and height with rubber wheels on ball bearings.

# MVS - PROFILE SANDERS



"MVS 6500"



## TECHNICAL SPECIFICATIONS

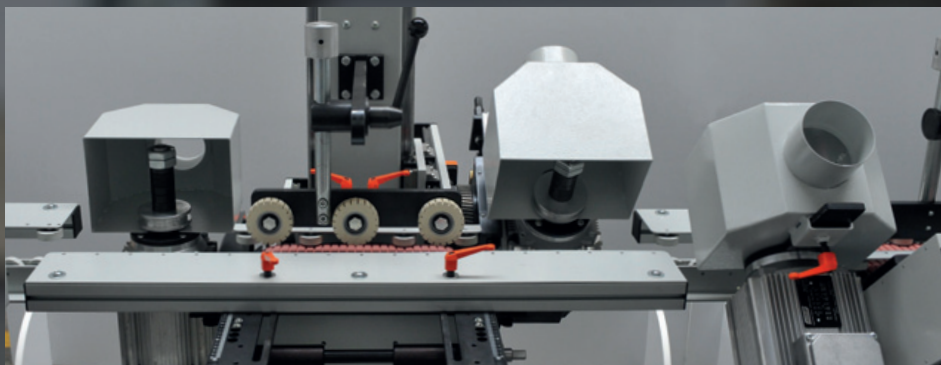
- Feed speed:  
**from 10 to 50m/min.**
- Workpiece size:  
**minimum** 500 (length)  
x10 (width) x10mm (height),  
**maximum** 300 (width)  
x100mm (height);  
no limit in length.

## OPTIONAL

- Short workpiece conveyor with motorised belt.
- Motorised side guides.
- CNC axes positioning.







The “MVS” series offers solutions for any profile sanding problem, machines set up for machining any shape on any material.

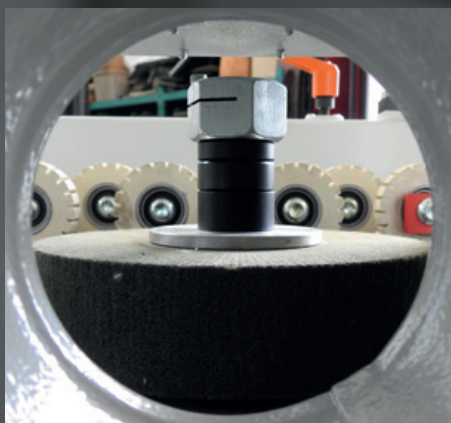
Other units and aggregates can be added to the “entry level” solutions to make them “tailor made”. The range includes nine “**basic machines**”, the dimensions of which vary according to their set-up.



## SET UP YOUR NEW DESTEFANI!

“DESTEFANI MVS” machines can be fitted with:

- abrasive belt sanding units for flat surfaces up to 250mm;
- abrasive belt calibration units for flat surfaces up to 250mm;
- abrasive belt sanding units for flat and/or shaped surfaces from 80mm to 160mm;
- abrasive grinder sanding unit with automatic recovery system.



## “STANDARD MODELS” IN THE “MVS” SERIES (entry level)

| MODEL      |                               | AT | SB | C |
|------------|-------------------------------|----|----|---|
| “MVS 2500” | min. workpiece length 800mm   | -  | 4  | - |
| “MVS 3000” | min. workpiece length 500mm   | -  | 4  | - |
| “MVS 3500” | min. workpiece length 800mm   | -  | 6  | - |
| “MVS 3600” | min. workpiece length 1.200mm | 1  | 4  | - |
| “MVS 4500” | min. workpiece length 500mm   | -  | 6  | - |
| “MVS 5000” | min. workpiece length 1.200mm | 2  | 4  | - |
| “MVS 6000” | min. workpiece length 1.200mm | 3  | 4  | - |
| “MVS 7000” | min. workpiece length 1.200mm | 4  | 4  | - |
| “MVS 8000” | min. workpiece length 1.200mm | 4  | 4  | 1 |

## THE MAIN AGGREGATES

**AT:** belt sanding unit for flat or shaped surfaces.

**SB:** sanding unit with shaped abrasive grinder and automatic device for wheel wear balancing.

**C:** oscillating belt sanding unit for flat surfaces.

## WHAT YOU CAN DO...

As an example, the table below shows just a few of the many machining operations that can be carried out due to the extreme versatility of "MVS" profile sanders...

